

Synergy Freight Billing

Increase Invoicing
Efficiency with
Automated Bill
Entry & Manifests



For everyone from dock workers to data entry clerks, freight billing needs to be accurate and fast. Inefficient freight billing costs the company time, money and customers.

Synergistics has your solution.



Guaranteed Business Solutions

Freight Billing works like this:

Synergy Freight Billing streamlines your invoicing system by creating a database of information on customers and billers, providing fast and accurate data entry.

The system uses computers connected to your local area network for on-site data entry. Bills are sent to a queue file, then downloaded to your host computer—in real time or at your convenience. Bill entry continues even if the host computer goes off-line or slows down. And with the addition of a regional or centralized imaging system, your office can become paperless.

Travel Copy, an optional module, produces bar-coded travel copies as the skeleton bill information is entered into your system. The information gathered can also be used for outbound line haul planning.

Synergy Freight Billing supports the transmission of billing information to and from interlines via EDI, allowing EDI bills to be passed through Synergy Freight Billing's editing facilities.

Seamless Integration

Synergy Freight Billing allows pickups using Synergy Dispatch® to be relayed via wireless from a mobile data terminal, creating a skeleton bill. With Synergy Cross Dock Tracking, the system can scan the bar-coded travel copy, route the shipment to the correct door/trailer, and then track the shipment's location and status from unloading to reloading.

Synergy Freight Billing can be a useful addition to your office; and with our interrelated products, it can become the cornerstone of your total terminal system.

The Birth of a Bill

A driver picks up the shipment, applying a bar-coded pro number label to the bill of lading. With an optional Mobile Data Terminal (MDT), the skeleton bill information can now be sent back to dispatch and billing.

After pickup, the driver turns in the bills of lading to the terminal office, where billers use the bill of lading to either complete bills received from the driver's MDT, or enter initial bill information into the Pro Entry screen.

Using the Billing System

In Synergy Freight Billing, customers (shippers, consignees and third parties) are assigned a "4x4" alphanumeric code. When a partial or complete 4x4 code is entered, the customer's information appears in the bill entry screen. The system automatically enters the destination terminal based on the consignee's city or zip code.

*A custom solution for
your company's
specialized billing needs.*

The screenshot shows the 'Freight Bill Main Screen' software interface. It features a grid of input fields for various data points. At the top, there are fields for 'Pro#: []', 'Suffix: [00]', 'HI Suffix: []', 'Orig Term: [PHX]', 'Dest Term: []', and 'Hold Freight: []'. Below this are sections for 'Terms: []', 'Credit: []', 'Driver: []', 'Trailer: []', 'Beyond SCAC: []', and 'PU Date: [02/02/2001]'. The main body is divided into 'Shipper' and 'Consignee' sections, each with fields for '4x4', 'Name', 'Address', 'PO Box', 'Altn', 'City', 'State', 'Zip', 'Country', 'Phone', and 'Store #'. A 'Bill To' section follows with similar fields. On the right side, there are checkboxes for 'COD Shpmt: [N]', 'Ship Type: [1]', 'In Bond: [N]', 'Rate Exc: []', and 'Appl Req: [N]'. At the bottom, there are fields for 'Decl Value: []', 'Total Pcs: []', 'Total Charges: []', 'Total Wgt: []', 'Loose Pcs: []', '# Pallets: []', 'Pcs on Pfts: []', 'STC: []', 'Length: [] Ft', 'Width: [] Ft', 'Height: [] Ft', and 'Cubic Ft: []'. The interface concludes with buttons for 'Detail Screen', 'CDD', 'Interline', 'Save <F9>', 'Cancel <F10>', and 'Retrieve Form'. A status bar at the very bottom reads 'PRODUCTION MODE - Enter 9-digit ProNumber including Check Digit'.

Comprehensive and easy to use
bill entry screen

Ma

Masks, keywords and standard items facilitate bill entry by prefilling some items. Masks are formats associated with specific customers to which data entry must conform. They limit the data to alpha and/or numeric characters and to a specified length. Keywords allow the biller to enter a few digits into a bill's detail lines to recall more extensive information. Standard items allow the biller to recall an entire item with either a code or by selecting from a list.


Fields, including interline, COD, and PARS, are entered into pop-up windows as the biller moves through the main bill entry screen.

HAZMAT information is entered from a standard item list with additional details such as chemical name and DOT exemption status entered into a popup screen.

Synergy Freight Billing also allows supervisors and managers to review and correct bills, review a specific bill's history, and generate customized performance reports by individual biller, billing team or pro number.

Optional Travel Copy

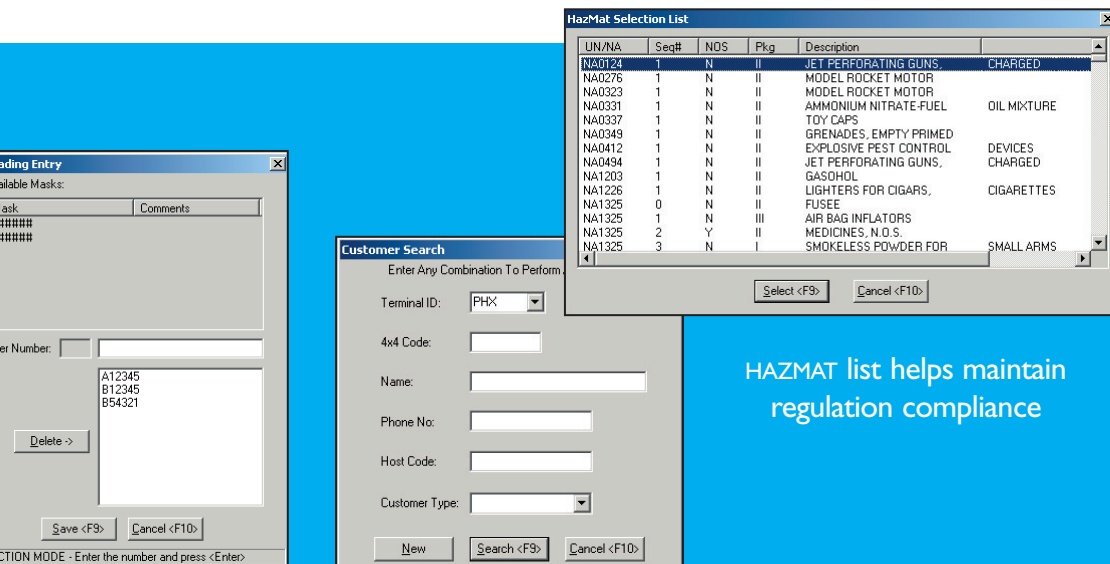
Travel Copy, an optional module, creates a bar coded document which will move with the freight from the origin

TRAVEL COPY			SHIP DATE: 11/12/00			
Best Freight 1 Main Street Anytown, ST 00000-0000			DESTINATION SVC: AAA DELIVERY DAY: MON			
Consignee: JC PENNEY & SONS RECEIVING DOCK ENCLOSURES STATESVILLE NC 28677		Shipper: AMERICAN TOURISTER 4300 BULLS BAY HWY JACKSONVILLE FL 32219	ORIGIN JAX			
DESCRIPTION: LUGGAGE / PACKING LIST						
DRIVER: 1234567	UNLD JAX	HANDLING STATUS	HANDLING UNITS	OS&D	TRAILER	CHECKER
PIECES: 257	LOAD ATL		1200			
WEIGHT: 5777	UNLD ATL		6		9120	RB
TERMS: COLLECT	LOAD CLT		6		9120	RB
HANDLING UNITS: 10	UNLD CLT		5	1	4644	WE
	LOAD					WE
	DEST CLT		5	1	8781	MK
11/12/2000 14:00		V 5.0		SYNERGISTIC SYSTEMS, INC.		

terminal through break bulk and final destination terminals. Line haul routing is coded on the document. The Travel Copy bar code can be scanned for use in Synergy CrossDock Tracking to facilitate fast and accurate freight handling.

Bigger Bills are Better

And finally, for quick and easy data entry, Synergy Freight Billing can be used with an imaging system and large screen monitor, allowing the biller to display a scanned image of the physical bill of lading adjacent to the bill entry screen.



HAZMAT list helps maintain regulation compliance



Masks and standard forms simplify bill entry

Flexible customer search screen

Synergy Freight Billing



What Our Customers Say...

“Biller productivity has increased by at least 100 percent, with an increase in quality due to fewer errors...”

“Travel Copy gives our dockmen the benefit of working from a uniform unloading document without waiting for bill entry.”

“Synergy Freight Billing has enabled our bill entry personnel to greatly enhance their production with features such as item formats, keywords and special customer requirements.”

Features:

- Double your current production
- Expedite freight movement across dock
- Ensure data correction before problems occur
- Integrate products to provide complete terminal management
- Comply with HazMat through database updates
- Look up and code customers quickly
- Increase productivity and accuracy with Standard Bill Formats
- Ensure correct entry formats with masks
- Integrate easily with your host system

Benefits:

- Recover investment quickly
- Lower personnel costs
- Improve cash flow
- Reduce OS&D and misloads
- Eliminate HazMat fines
- Create a paperless office
- Centralize billing systems
- Expedite interline shipments

To learn more about how our innovative solutions can help your company, call us or visit our website.

You'll love our solutions, we guarantee it!



Guaranteed Business Solutions

442 Third Street
Neptune Beach, FL 32266
904.249.0201 • Fax: 904.249.8045
www.syn-sys.com